

Sunmaster

Solar Systems

Rinnai

Relax. It's a Rinnai.



Rinnai draws from over 40 years experience in designing and manufacturing Hot Water Systems. The Rinnai Sunmaster range of Solar Hot Water Systems have been designed specifically to make the most out of harvesting free energy from the sun with an affordable outlay.

Close Coupled Systems

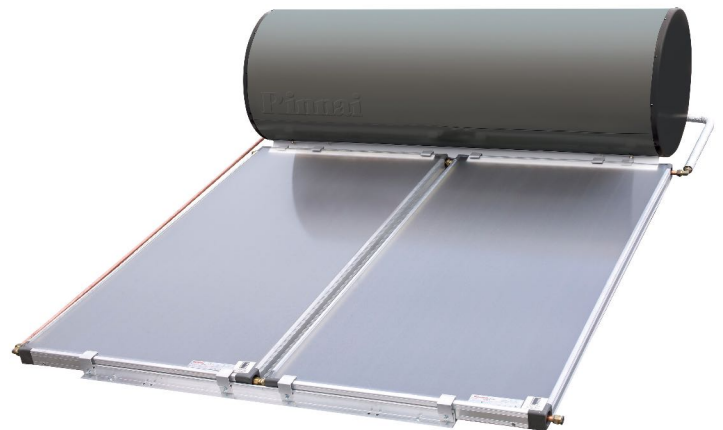
A close coupled solar system is where the storage tank and the Solar Collectors are coupled together and the installation is on the roof.

Rinnai Sunmaster close coupled solar systems use the thermo-syphoning principle (i.e. hot water rises because it is less dense) to circulate the water through the Collectors and then to the storage cylinder without the need for a pump.

Supplementary heat is available from an electric element or a Rinnai gas booster if insufficient heat is available from the sun (such as during cloudy or rainy weather or during winter months).

Features and Benefits

- > Low heat loss due to greater insulation
- > Gas or electric booster options
- > Carbon steel tank with a vitreous enamel glass lining to protect against corrosion
- > Thermal Arrestor valve reduces stress on the tank by preventing excessive hot water temperature stored in the tank
- > Technically very efficient, economical to install and low maintenance
- > No electricity is required to operate pumps to recirculate the water through the collectors
- > Saves space on your land as there is no ground mounted tank
- > High performance resulting in high Small Scale Certificates awarded



						System Selection No of people	
Description	Order code	Size	Booster	Collectors	Boost capacity	Average usage	High usage
Close coupled electric	System 9	200	2.4 kW	1	100	3	2
	System 10	330	3.6 kW	2	180	6	4
Close Coupled gas	System 11	200	S20	1	20L/min	3	2
	System 12	330	S26	2	26L/min	6	4

Solar Hot Water Systems		Solar compatible Continuous Flow Water Heaters – models S20 and S26 and other models converted by Rinnai for solar applications ⁽¹⁾⁽³⁾		Storage cylinders		Solar collectors	Components ⁽²⁾
		Heat exchanger	All other components	Vitreous Enamel (Glass) lined Sunmaster range	Stainless Steel Prestige	Enduro Enduro XL Excelsior	
Domestic use	Parts	12 Years	3 Years	5 Years	10 Years	7 Years	1 Year
	Labour	3 Years	3 Years	3 Years	3 Years	1 Year	1 Year
Commercial use	Parts	5 Years	1 Year	1 Year	5 Years	5 Years	1 Year
	Labour	1 Year	1 Year	1 Year	1 Year	1 Year	1 Year

(1) The continuous flow models in this column are suitable only for solar hot water applications. Any failure or service issue when installed in a non solar hot water application is not covered by warranty. (2) Components include pumps, system controllers, sensors, thermostats, valves, electric heating elements and anodes where applicable. (3) Rinnai Infinity 26 Internal, HD200i, HD200e and HD250e models can be converted for solar applications by Rinnai by order request.

Rinnai Australia Pty Ltd

ABN 74 005 138 769

100 Atlantic Drive,
Keysborough, Victoria 3173

For further information visit

www.rinnai.com.au

or call 1300 555 545

Dealer Details:



256 Denison Street Rockhampton QLD 4700
Ph: 07 4927 1144 sales@ecosmartsolar.com.au

Rinnai

Relax. It's a Rinnai.